

INNOVATIVE SOLUTIONS

crea spine

A L I F C A G E
STAND-ALONE HYBRID



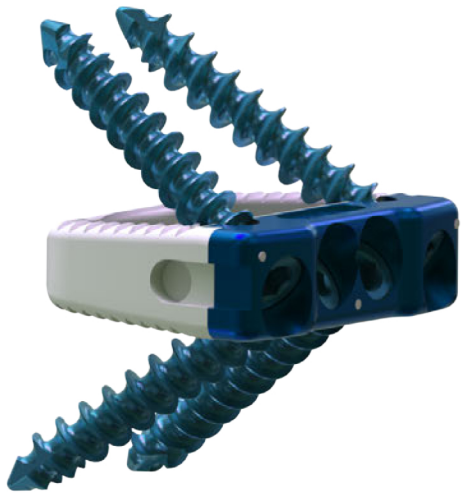
BTB Medical
a subsidiary of **GROUP BTB**

www.groupbtbmedical.com

INNOVATIVE SOLUTIONS

INNOVATIVE SOLUTIONS

ALIF CAGE STAND-ALONE HYBRID



The ALIF Stand-Alone Hybrid cage implant is produced from Biocompatible Titanium and PEEK material, a thermoplastic solution compatible with the body and causes no artifact. Completely compatible with MRI for in-vivo applications. The cage system is also available in forms of; rigid, bladed, expandable and bladed expandable alternatives.

The cage is a stand-alone anterior lumbar interbody fusion device designed to combine the functionality and benefits of a lumbar interbody spacer and an anterior lumbar plate.

The wide graft chamber optimizes the contact between graft and vertebral endplates, enhancing the quality of the fusion. 42 deg. Screw angle withstands expulsion forces and midline screw placement with +/- 10 deg. angulation aids optimal access and solid fixation.

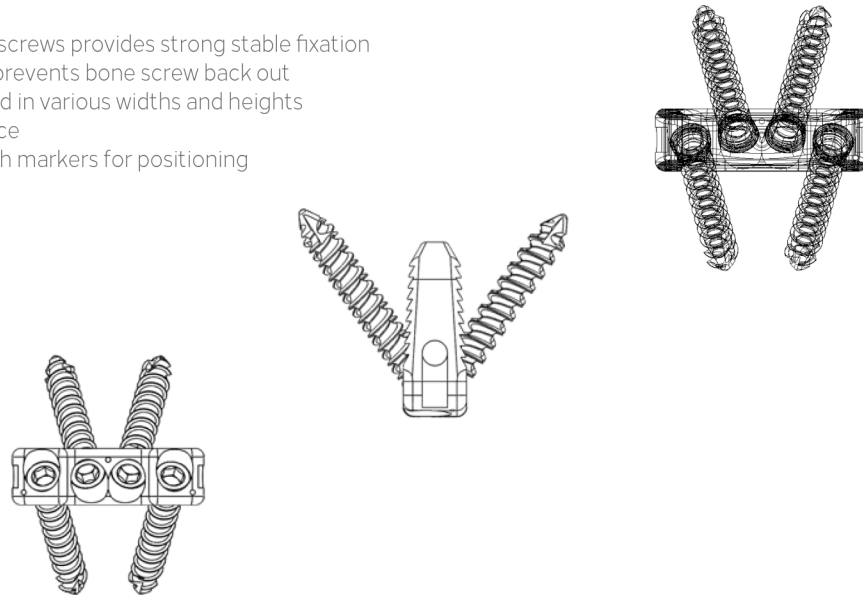


ALIF STAND - ALONE HYBRID CAGE INSTRUMENT SET

DESCRIPTION	QUANTITY	REF.NO
ALIF CAGE INSERTER WITH GUIDE	1	CS35001
FINAL IMPACTOR	1	CS35002
TRIAL HOLDER	1	CS35003
TRIAL 26x30 H: 10/12/14/16 7°	4	CS35004
TRIAL 28x34 H: 10/12/14/16 7°	4	CS35005
TRIAL 30x36 H: 10/12/14/16 7°	4	CS35006
TRIAL 26x30 H: 10/12/14/16 14°	4	CS35004
TRIAL 28x34 H: 10/12/14/16 14°	4	CS35005
TRIAL 30x36 H: 10/12/14/16 14°	4	CS35009
GREFT BOX	1	CS35010
GREFT PUNCH	1	CS35011
ALIF CAGE REMOVER	1	CS35012
MALLET (SLOTTED)	1	CS35013
CHISEL	1	CS35014
RING CURETTE	1	CS35015
SPOON CURETTE / LEFT	1	CS35016
SPOON CURETTE / RIGHT	1	CS35017
RASP CURVED 45°	1	CS35018
I HANDLE (I/O COUPLING)	1	CS35019
AWL (ANGLED)	1	CS35020
DRILL (ANGLED)	1	CS35021
SCREW DRIVER (ANGLED)	1	CS35022
ALIF CAGE REMOVER	1	CS35023
TRIAL AND IMPLANT BOX	1	CS35024
CONTAINER	1	CS35025
TRAY	1	CS35026

REF CODE	DESCRIPTION	ANGLE (S/I)
C162630107H ~ C162630167H	ALIF STAND-ALONE HYBRID CAGE 26x30 mm H:10/12/14/16 7 DEG.	3.5/3.5 Degree
C162834107H ~ C162834167H	ALIF STAND-ALONE HYBRID CAGE 28x34 mm H:10/12/14/16 7 DEG.	3.5/3.5 Degree
C163036107H ~ C163036167H	ALIF STAND-ALONE HYBRID CAGE 30x36 mm H:10/12/14/16 7 DEG.	3.5/3.5 Degree
C1626301014H ~ C1626301614H	ALIF STAND-ALONE HYBRID CAGE 26x30 mm H:10/12/14/16 14 DEG.	7/7 Degree
C1628341014H ~ C1628341614H	ALIF STAND-ALONE HYBRID CAGE 28x34 mm H:10/12/14/16 14 DEG.	7/7 Degree
C1630361014H ~ C1630361614H	ALIF STAND-ALONE HYBRID CAGE 30x36 mm H:10/12/14/16 14 DEG.	7/7 Degree

- Four divergent screws provides strong stable fixation
- Locking screw prevents bone screw back out
- Implant provided in various widths and heights
- Large graft space
- Radiolucent with markers for positioning



REF CODE	DESCRIPTION
C16L005525	ALIF STAND-ALONE CAGE LOCKING SCREW 5.5X25 mm
C16L005530	ALIF STAND-ALONE CAGE LOCKING SCREW 5.5X30 mm
C16L005535	ALIF STAND-ALONE CAGE LOCKING SCREW 5.5X35 mm
C16L006525	ALIF STAND-ALONE CAGE LOCKING SCREW 6.0X25 mm
C16L006530	ALIF STAND-ALONE CAGE LOCKING SCREW 6.0X30 mm
C16L006535	ALIF STAND-ALONE CAGE LOCKING SCREW 6.0X35 mm



crea spine
innovative solutions



www.groupbtbmedical.com